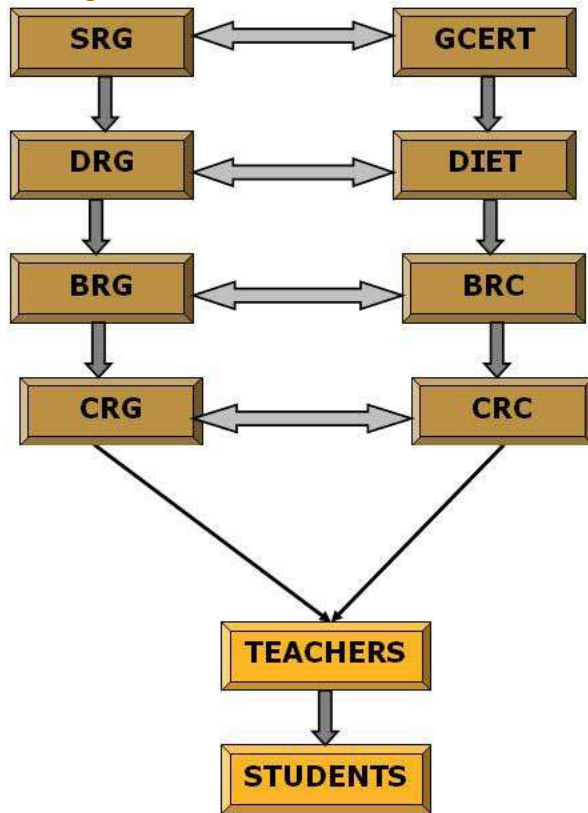


Training Programs

- **Area of operation :**
 - Primary Education
 - Secondary-Higher secondary Education (For Specific programmes)
 - PTTIs

- **Training Structure :**



- **Methodology :**
 - Groupwork/Groupdiscussion, Demonstration
 - Experiments, Observation, Project
 - Dramatisation/Dilogue
 - Story telling, Lectures
- **Target group :**
 - EIs, BRC- CRC Co-ordinators, CRG (Cluster Resource Group) & Primary Teachers
 - Sec. /High. Sec. Teachers & students (For Specific Programmes like Maths-Science exhibition, School Adolecence)
 - PTTIs Lecturers, Students
- **Special Target group :**
 - Girls & women
 - Scheduled Castes & Schedules Tribes
 - Minorities
 - The handicapped, &
 - Other educationally disadvantaged groups e.g. working children, slum-dwellers, inhabilants of hilly, desert and other inaccessible area etc.